



TT STUDIOS

17A KINGSLAND ROAD

FLEXIBLE SPACE AND ROOM HIRE

TT STUDIOS FLEXIBLE SPACE AND ROOM HIRE

SET OVER FOUR FLOORS BETWEEN THE VIBRANT AREAS OF SHOREDITCH AND HOXTON - ARGUABLY THE CREATIVE HEART OF LONDON – TT STUDIOS AT 17A KINGSLAND ROAD BOAST BEAUTIFUL BRICK-WALLED, WOODEN FLOORED INTERIORS WITH AN INDUSTRIAL FEEL THAT REFLECT THE CHARACTER OF THE NEIGHBOURHOOD.

TT Studios are able to host a large variety of events, offering a number of rooms for short-term rental. These range from a generous 50sqm open studio to a quaint 16sqm room, all of which benefit from high ceilings, historical features and excellent natural light.

The rooms are flexible in nature and appropriate to a large number of uses, such as product launches, social events, meeting rooms, pop-up showrooms or galleries, artist / photography studios and temporary offices.

Conveniently located between Hoxton and Shoreditch High Street - both within 0.3 miles, the building is also easily accessible from Old Street and Liverpool Street Stations.

17A Kingsland Road has a rich and varied history – in the 19th century Shoreditch Police Station occupied the site, and a number of unique features of the building's original use remain - such as a tunnel that runs from the basement straight to Old Street Police Station and old brick vaulted prison cells in the basement.



SERVICES

ALL OUR STUDIOS ARE AVAILABLE FOR RENT BY THE DAY, HALF-DAY OR HOURLY, WITH LONGER SHORT-TERM RENTALS ALSO AVAILABLE.

STUDIO OVERVIEW

STUDIO 2

Capacity: 40 persons (20 as a meeting room)

Dimensions: 11.0m x 4.6m (36ft x 15ft)

Area: 47sqm (506sqft)

STUDIO 3

Capacity: 25 persons (16 for a meeting)

Dimensions: 6.2m x 5.4m (20ft x 17ft)

Area: 34sqm (366sqft)

STUDIO 4

Capacity: 12 persons (8 for a meeting)

Dimensions: 4.9m x 3.2m (16ft x 10ft)

Area: 16sqm (172sqft)

STUDIO 5 (THE LOUNGE)

Capacity: 50 persons (20 as a meeting room)

Dimensions: 12.3m x 4.3m (40ft x 14ft)

Area: 48sqm (517sqft)

FOOD & DRINK

We have a kitchen on-site and can provide tasty food platters with cured Italian meats, olives, cornichons, fresh bread and delicious cheeses specially selected by Neals Yard Dairy. Coffee, tea and water are provided in each studio as standard. We can also accommodate external caterers.

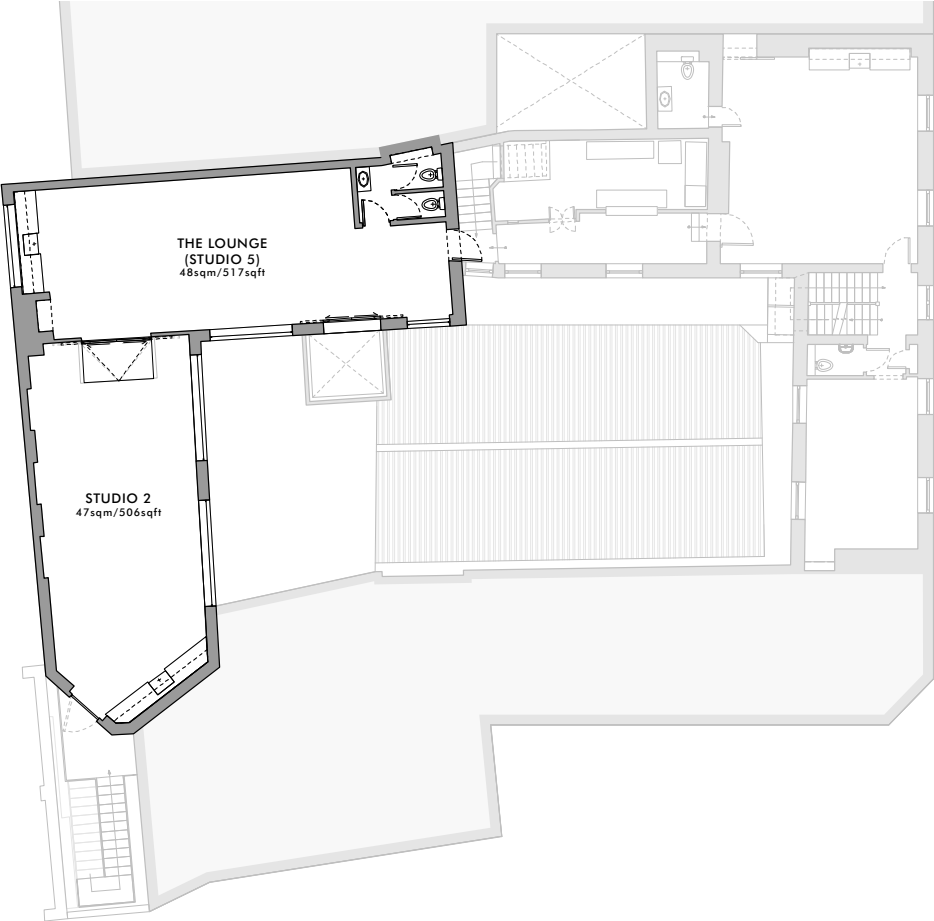
EQUIPMENT AND RESOURCES

We can provide meeting tables, chairs, and whiteboards to each studio, we also have an Epson EB-S02 SVGA Projector (connection via USB 2.0 Type B, VGA, Component or S-Video) and 83" screen available to all studios. All rooms come with connection to 152mb super fast broadband via Wi-fi as standard. Studios 3 and 4 have Sonos systems that allow music to be played wirelessly from personal devices.



THE WEST WING

STUDIOS 2 & 5



THE WEST WING

STUDIOS 2 & 5

THE WEST WING CONSISTS OF OUR TWO LARGEST ROOMS, STUDIO 2 AND STUDIO 5 (THE LOUNGE) EACH PROVIDING 50SQM OF OPEN, FLEXIBLE, SPACE WITH AN EX-INDUSTRIAL AESTHETIC.

Natural light floods into both rooms through a number of large, historic, multi-pane cast-iron framed windows. These windows combine with whitewashed brickwork walls, 'factory' light fittings, exposed roof joists and original timber floorboards to give a strong and genuine industrial character true to the Shoreditch location. Despite this strong character the palette of the rooms is neutral enough to allow for customisation for themed or brand-specific events.

Both rooms are available for private hire by the day or half day, or for longer short-term lettings - either individually, or combined into a large space connected via the central sliding doors.

The spaces are well proportioned, with generous ceiling heights in excess of 3 metres, making them appropriate for a large variety of uses such as: meeting rooms, studio hire, photograph studios, cocktail workshops, bartender or butler training, fashion shows, pop-up showrooms or galleries, and brand-oriented experiences.



NATURAL LIGHT FLOODS INTO BOTH ROOMS THROUGH A NUMBER OF LARGE, HISTORIC, MULTI-PANE CAST-IRON FRAMED WINDOWS.

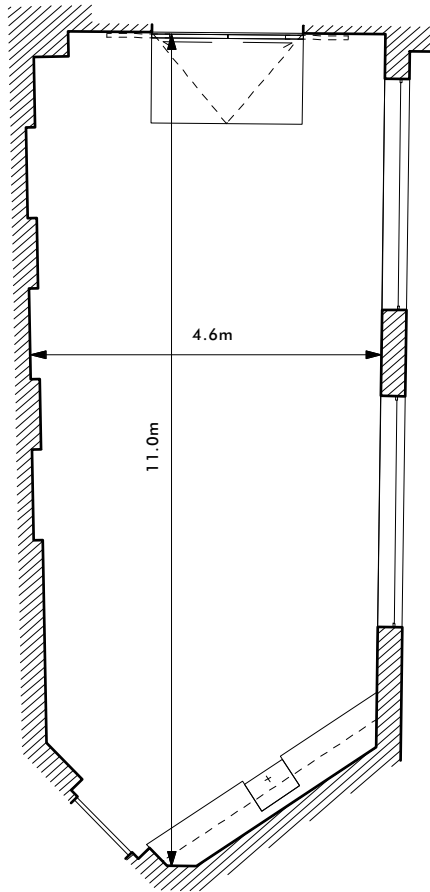


THE WEST WING

STUDIOS 2 & 5

STUDIO 2 DIMENSIONS

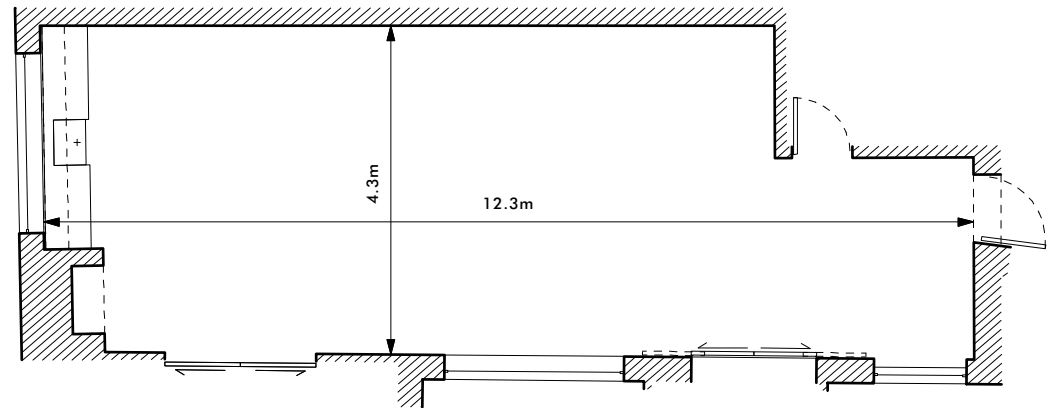
- Capacity: 40 persons
- Dimensions: 11.0m x 4.6m (36ft x 15ft)
- Area: 47sqm (506sqft)



STUDIO 2
47 sqm / 506sqft

STUDIO 5 DIMENSIONS

- Capacity: 50 persons (20 as a meeting room)
- Dimensions: 12.3m x 4.3m (40ft x 14ft)
- Area: 48sqm (517sqft)

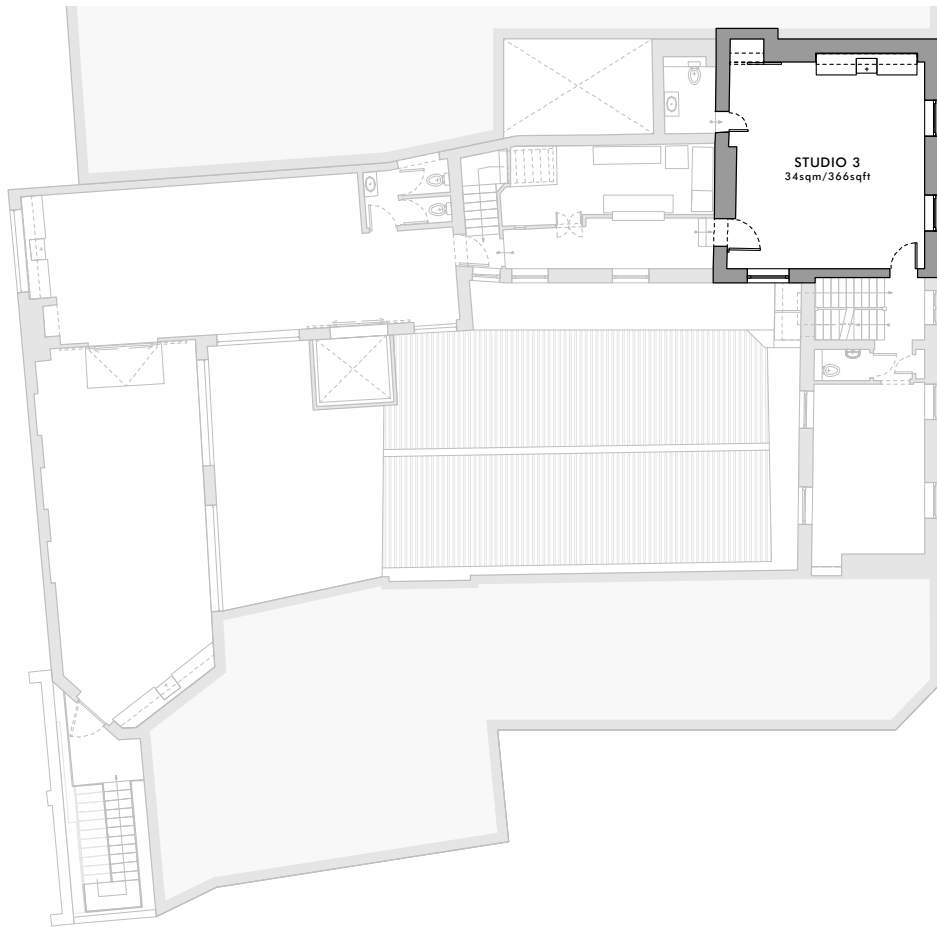


THE LOUNGE (STUDIO 5)
48 sqm / 517sqft

STUDIO 2 & STUDIO 5 DETAILS

- Ex-industrial aesthetic
- Large historic 'warehouse-style' windows
- Abundance of natural light
- Private unisex WC
- Meeting tables, chairs, and whiteboard available
- Projector and screen available
- Coffee, tea and water can be provided
- Food service available
- Connection to 152mb super fast broadband by Wi-fi or Ethernet
- Sink with hot and cold water, located within main space
- Access to fridge available
- Power supply: 7 double sockets evenly distributed
- Available to hire by the hour, day or half-day
- Longer short-term lettings possible

STUDIO 3



STUDIO 3

STUDIO 3 IS OUR MID-SIZED ROOM, AT 34SQM. VIRTUALLY SQUARE IN PROPORTIONS, AND WITH HIGH (3.3M) CEILINGS, STUDIO 3 IS AN ADAPTABLE SPACE APPROPRIATE TO A LARGE NUMBER OF USES.

Like all our rooms, Studio 3 benefits from great natural light with tall traditionally proportioned windows on two walls. The room also boasts original timber floorboards, an exposed brickwork chimney-breast, industrial light fittings, and a quirky vintage counterbalanced sliding door.

Studio 3 is hooked up to our Sonos System, allowing you to wirelessly connect your device to

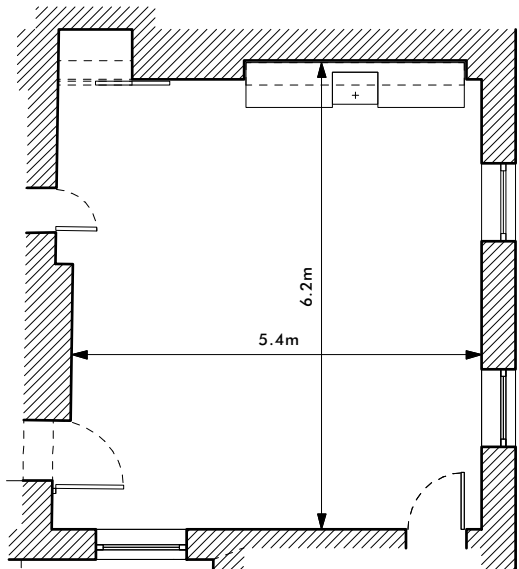
play music through our high-end hard-wired 100w Canton speaker system consisting of four satellite speakers and separate subwoofer. Studio 3 has a private unisex WC, directly accessed from within the room.

Studio 3 is available for private hire by the day, half day, or hourly – with longer short-term lettings also possible.

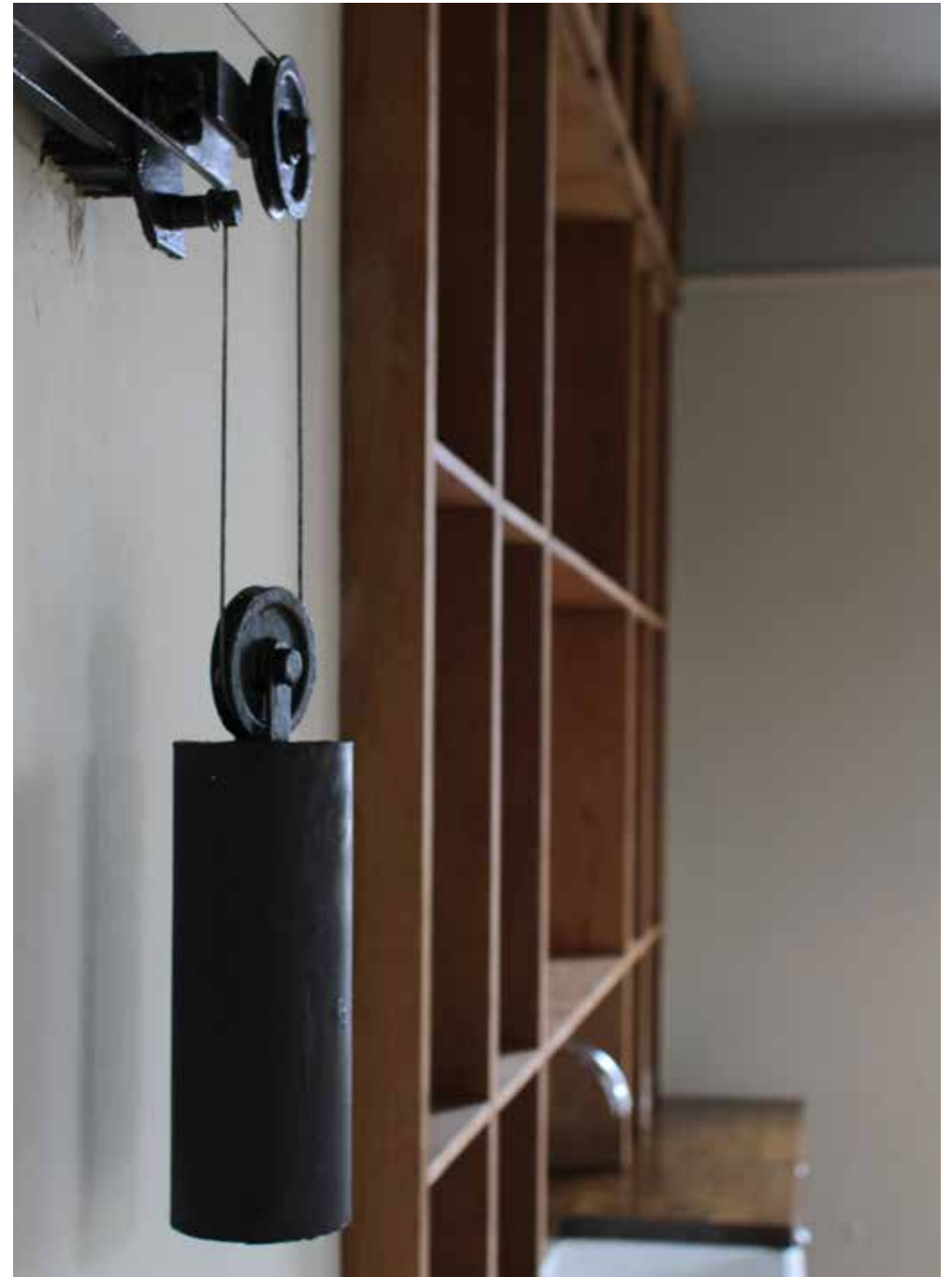


STUDIO 3 DETAILS

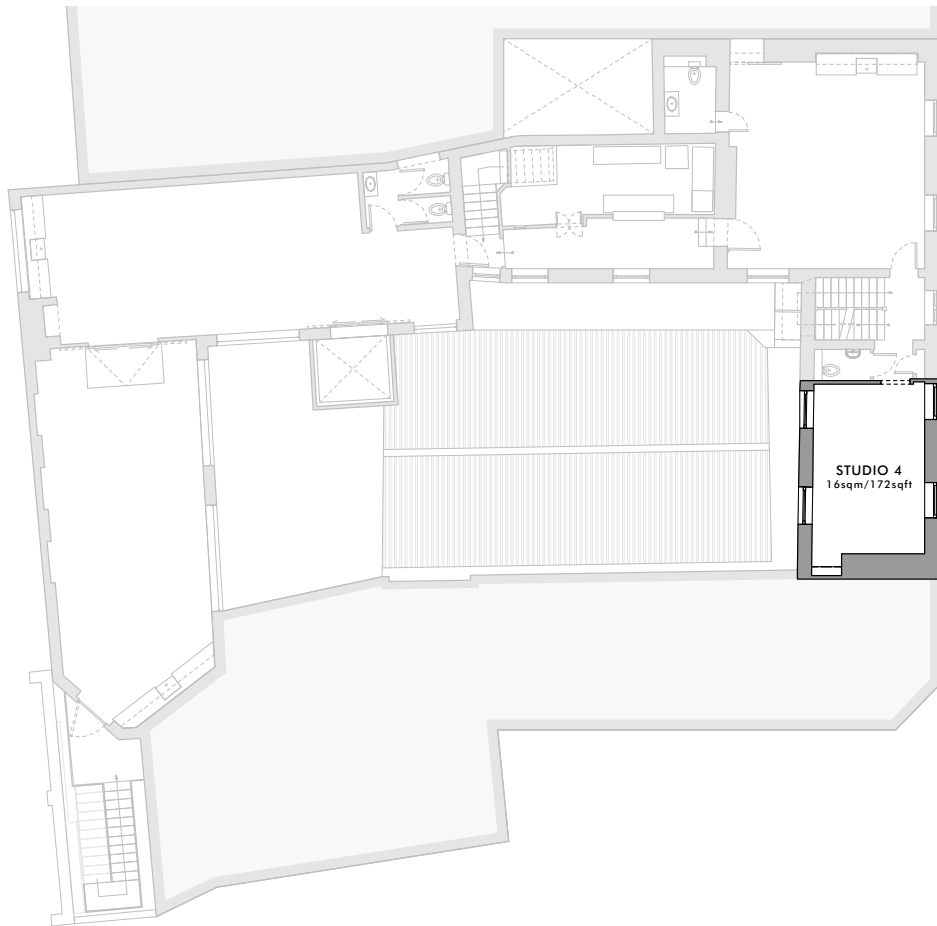
- Capacity: 25 persons (16 for a meeting)
- Dimensions: 6.2m x 5.4m (20ft x 17ft)
- Area: 34sqm (366sqft)
- Ex-industrial aesthetic
- Dual aspect, with an abundance of natural light
- Meeting tables, chairs, and whiteboard available
- Wireless connection via to Sonos to 100w Canton speaker system
- Projector and screen available
- Coffee, tea and water can be provided
- Food service available
- Connection to 152mb super fast broadband by Wi-fi or Ethernet
- Sink with hot and cold water and fridge located within room
- Available to hire by the hour, day or half-day
- Longer short-term lettings possible



STUDIO 3
34 sqm / 366sqft



STUDIO 4



STUDIO 4

STUDIO 4 IS OUR SMALLEST ROOM, AT 16SQM – BUT STILL BOASTS HIGH CEILINGS AND EXCELLENT NATURAL LIGHT. ITS SIZE MAKES IT IDEAL FOR A SMALL MEETING SPACE, TEMPORARY OFFICE OR POP-UP SHOWROOM, AND WE’LL HAPPILY ACCOMMODATE OTHER USES DEPENDING ON YOUR REQUIREMENTS.

The space is double aspect, boasting four, tall, traditionally proportioned windows along two facing walls – remarkable for a relatively small room. The room also benefits from original timber floorboards, exposed brickwork, and unique palm-tree wallpaper.

Use of a Sonos PLAY:3 hi-fi speaker is included as standard, allowing you to wirelessly connect your device to play music. Studio 4 also has easy access to an adjacent unisex WC.

Studio 4 is available for private hire by the day, half day, or hourly – with longer short-term lettings also possible.

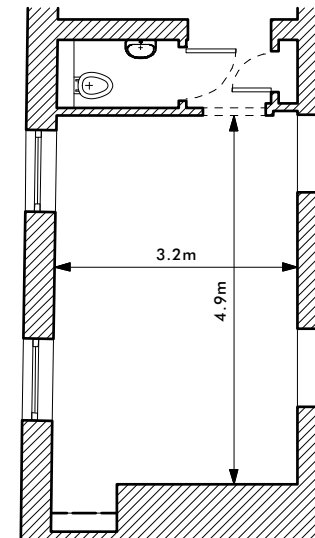




STUDIO 4

STUDIO 4 DETAILS

- Capacity: 12 persons (8 for a meeting)
- Dimensions: 4.9m x 3.2m (16ft x 10ft)
- Area: 16sqm (172sqft)
- Dual aspect, with an abundance of natural light
- Meeting tables, chairs, and whiteboard available
- Wireless connection to Sonos PLAY:3 hi-fi speaker
- Projector and screen available
- Coffee, tea and water can be provided
- Food service available
- Connection to 152mb super fast broadband by Wi-fi
- Available to hire by the hour, day or half-day
- Longer short-term lettings possible



STUDIO 4
16sqm / 172sqft

PREVIOUS CLIENTS

WE HAVE AMASSED AN IMPRESSIVE ARRAY OF CLIENTS, HOSTING EVENTS FOR HARRODS, NIKE, CADBURY, PROCTER & GAMBLE, PUMA, TOPSHOP, NOKIA, ITV, AND WIEDEN + KENNEDY.

Harrods

Cadbury



NOKIA

TOPSHOP

Wieden
Kennedy+

itv



P&G



TT STUDIOS

FLEXIBLE SPACE AND ROOM HIRE

17A KINGSLAND ROAD, LONDON E2 8AA

TELEPHONE: 02031 315 323

WWW.TTSTUDIOS.CO.UK