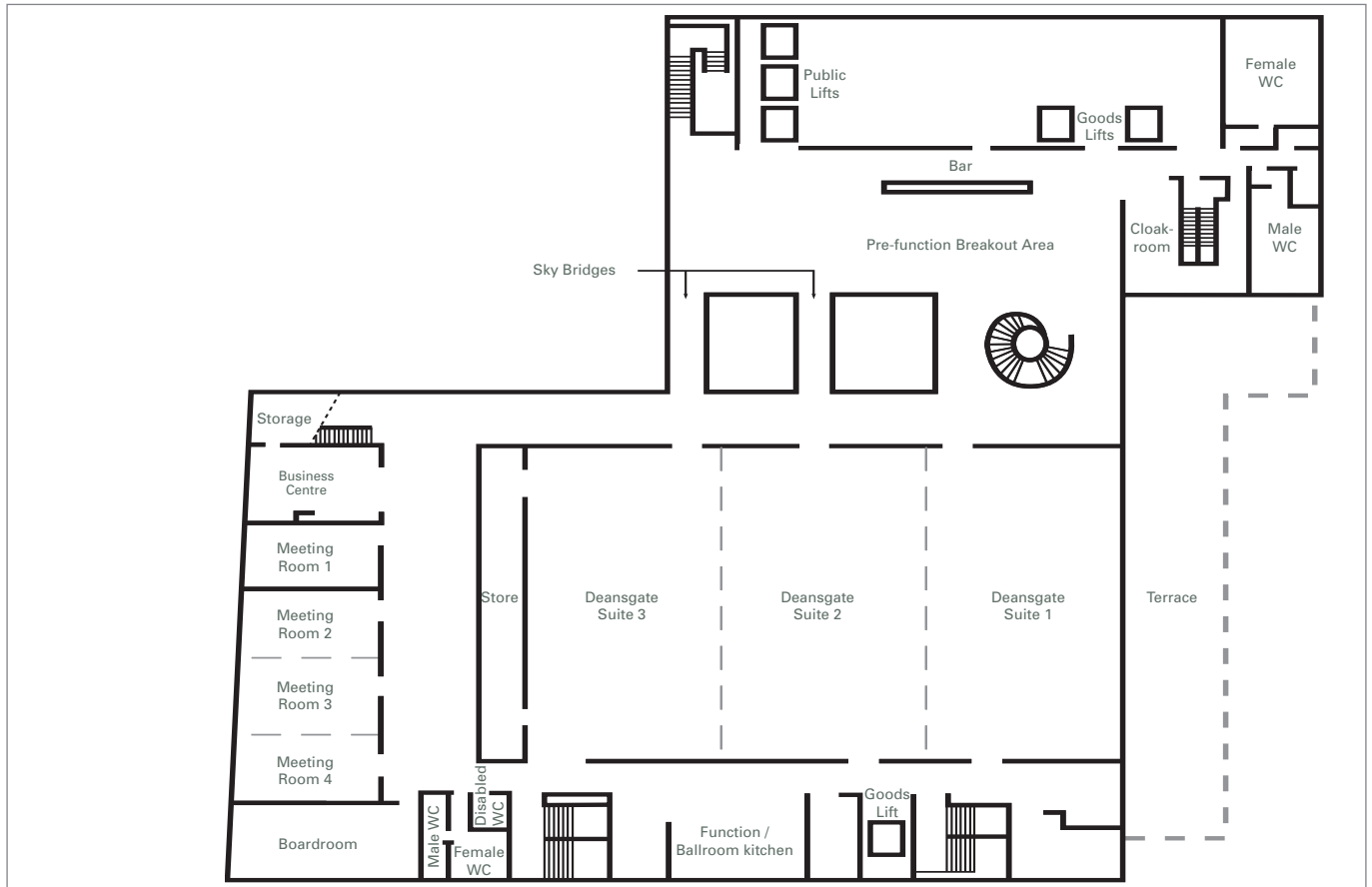




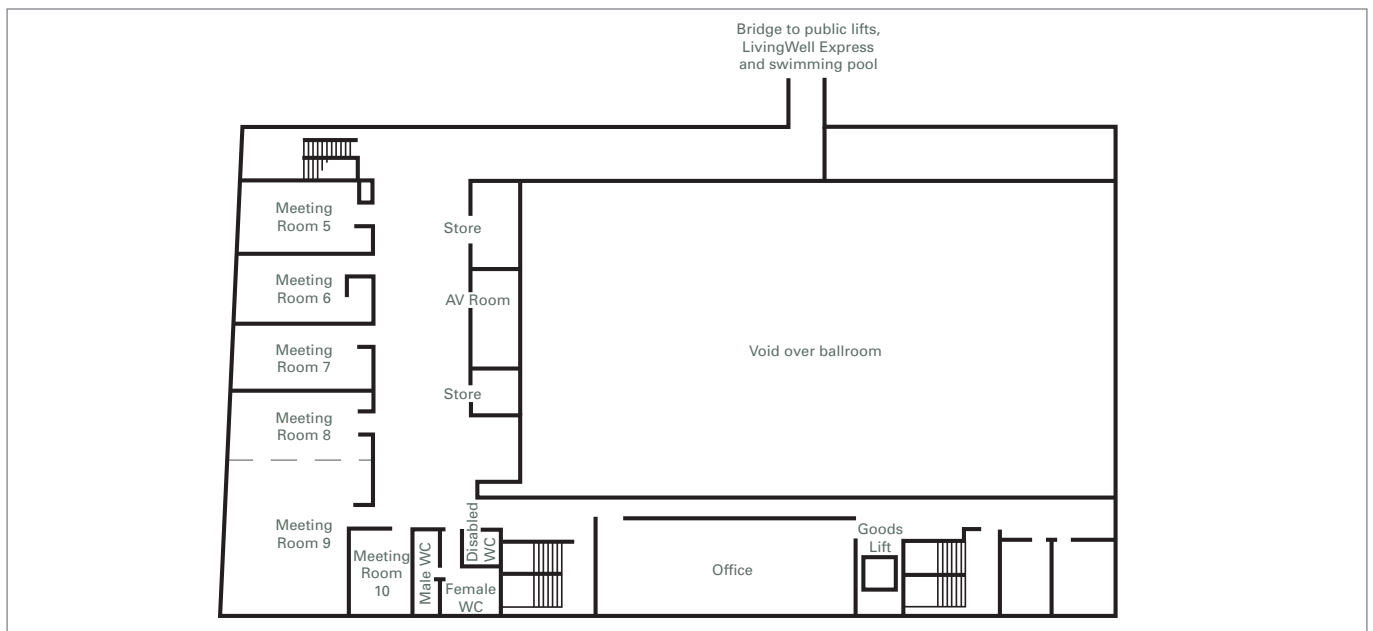
**Hilton**  
 Manchester Deansgate  
 Travel should take you places™

### Conference, Events and Hilton Meetings Overview

First Floor



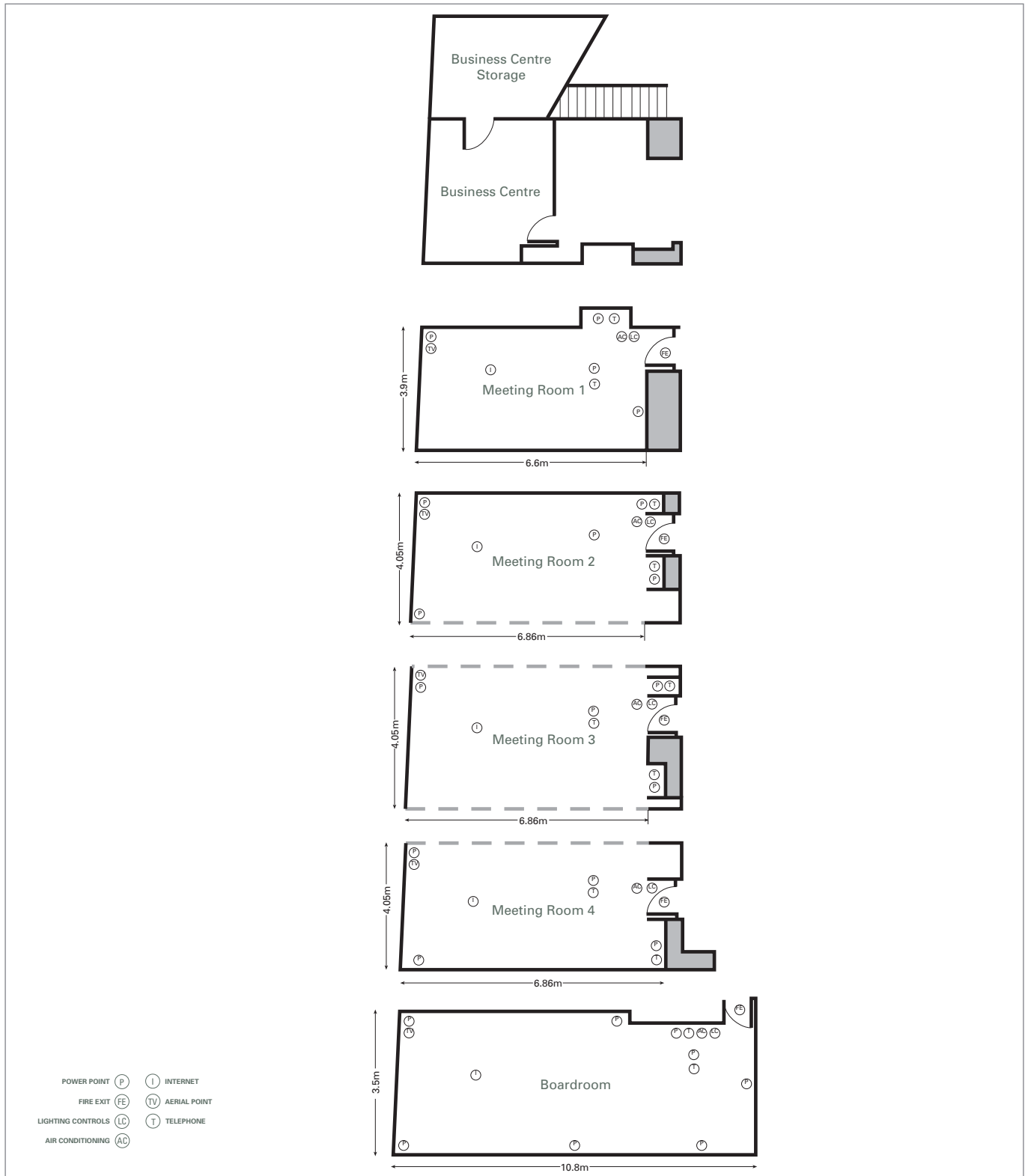
Second Floor





**Hilton**  
 Manchester Deansgate  
 Travel should take you places™

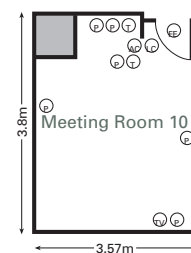
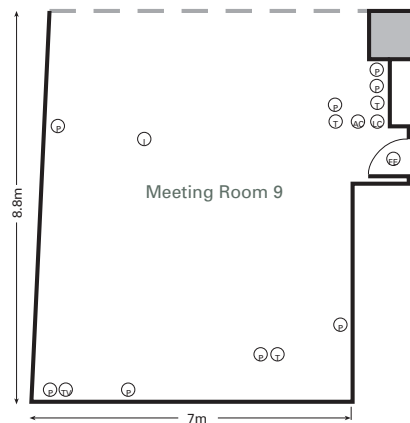
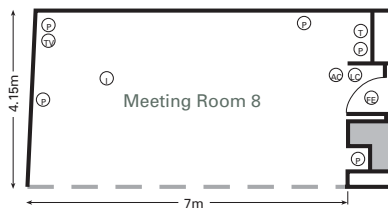
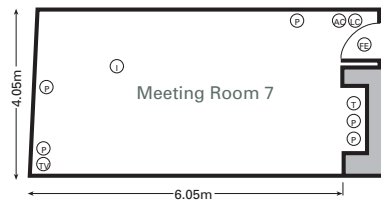
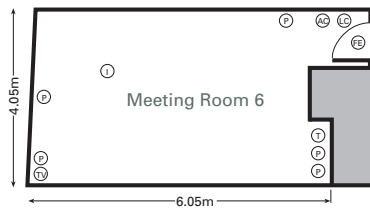
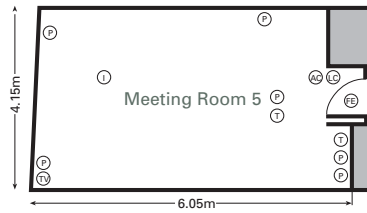
**Conference, Events and Hilton Meetings Floorplans**  
 First Floor





**Hilton**  
 Manchester Deansgate  
 Travel should take you places™

**Conference, Events and Hilton Meetings Floorplans**  
 Second Floor



- POWER POINT (P)
- INTERNET (I)
- FIRE EXIT (FE)
- AERIAL POINT (TV)
- LIGHTING CONTROLS (LC)
- TELEPHONE (T)
- AIR CONDITIONING (AC)

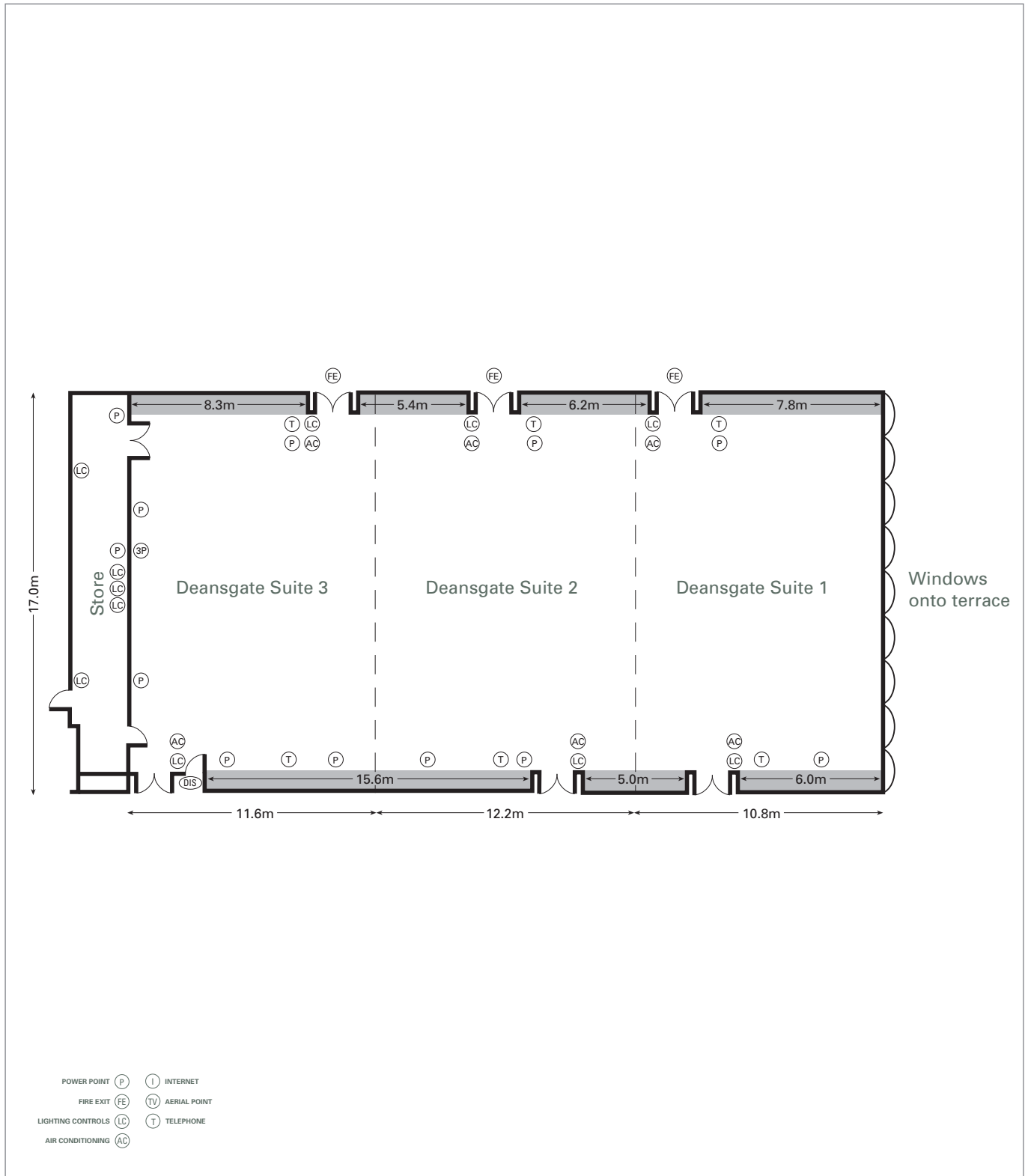


**Hilton**

Manchester Deansgate

Travel should take you places™

**Conference, Events and Hilton Meetings Floorplans**  
Deansgate Suite

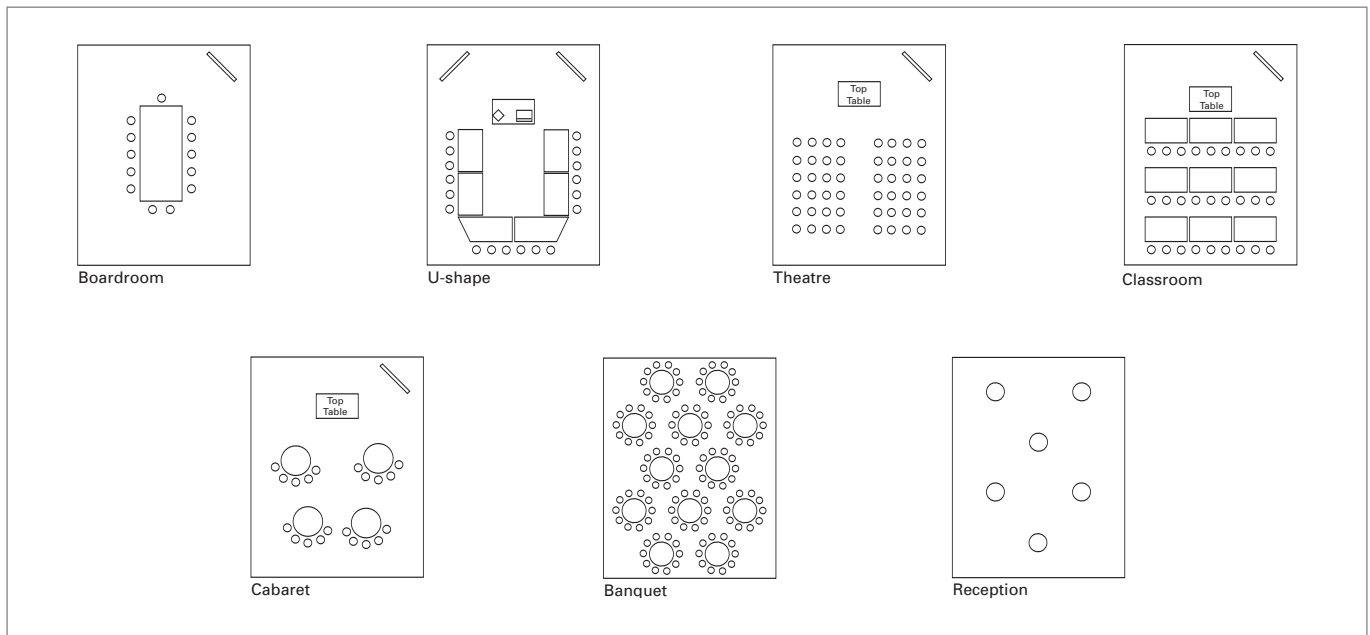




**Hilton**  
Manchester Deansgate  
Travel should take you places™

### Conference, Events and Hilton Meetings Capacities and Dimensions

Here are just some of the flexible room layouts that you can choose for your event.



### Capacities and Dimensions

	Boardroom	U-Shape	Theatre	Classroom	Cabaret	Banquet	Dinner Dance	Reception	Floor	Dimensions WxL (H) m	Air conditioning	3 Phase Power	Sound System	Blackout	Natural Daylight	Dimmer
Deansgate Suite	–	–	600	320	450	600	550	600	First	34.8 x 17 (7)	•	–	•	•	•	•
Deansgate Suite 1	60	80	200	120	100	180	120	200	First	10.8 x 17 (7)	•	–	–	•	•	•
Deansgate Suite 2	60	80	200	120	100	180	120	200	First	12.2 x 17 (7)	•	–	•	•	•	•
Deansgate Suite 3	60	80	200	120	100	180	120	200	First	11.6 x 17 (7)	•	–	•	•	•	•
Boardroom	20	–	–	–	–	20	120	–	First	3.5 x 10.8 (3.1)	•	–	–	•	•	•
Meeting Room 1	14	–	25	10	–	14	–	–	First	6.6 x 3.9 (3.1)	•	–	–	•	•	•
Meeting Room 2	14	–	25	10	–	14	–	–	First	6.86 x 4.05 (3.1)	•	–	–	•	•	•
Meeting Room 3	14	–	25	10	–	14	–	–	First	6.86 x 4.05 (3.1)	•	–	–	•	•	•
Meeting Room 4	14	–	25	10	–	14	–	–	First	6.86 x 4.05 (3.1)	•	–	–	•	•	•
Meeting Room 2, 3 & 4	30	35	90	40	–	70	–	80	First	12.7 x 6.86 (3.1)	•	–	–	•	•	•
Meeting Room 5	14	–	25	10	–	14	–	–	Second	6.05 x 4.15 (3.1)	•	–	–	•	•	•
Meeting Room 6	14	–	25	10	–	14	–	–	Second	6.05 x 4.05 (3.1)	•	–	–	•	•	•
Meeting Room 7	14	–	25	10	–	14	–	–	Second	6.05 x 4.05 (3.1)	•	–	–	•	•	•
Meeting Room 8	14	–	25	10	–	14	–	–	Second	7 x 4.15 (3.1)	•	–	–	•	•	•
Meeting Room 9	22	26	40	20	–	40	–	50	Second	7 x 8.8 (3.1)	•	–	–	•	•	•
Meeting Room 8 & 9	30	35	90	40	–	70	–	80	Second	7 x 12.95 (3.1)	•	–	–	•	•	•
Meeting Room 10	8	–	10	–	–	–	–	–	Second	3.57 x 3.8 (3.1)	•	–	–	•	•	•
Lift Access										1.1 x 2.4 (2.1)						max weight 2000 kg