

OPENING  
SPRING  
2019

YOUR NEXT  
**AMAZING**  
TEAM DAY  
OUT AWAITS...



THE CRYSTAL MAZE  
**LIVE EXPERIENCE**  
LONDON





WELCOME TO  
THE CRYSTAL MAZE LIVE  
EXPERIENCE LONDON

The **ALL NEW** Crystal Maze LIVE Experience London makes you the star of Britain's best loved game show - as you take on the ultimate team building experience.

At The Crystal Maze LIVE Experience our corporate packages are designed to bring your team together and test them in ways which are both challenging and fun!



**FOUR  
FULLY  
THEMED  
ADVENTURE  
ZONES**

---

ONE  
CRYSTAL  
DOME!

CORPORATE  
EXCLUSIVE -  
PLAY TOGETHER,  
FOR LONGER,  
OR BOTH!

---

**ALL  
NEW  
GAMES  
FOR  
2019**

CHOOSE  
GAMES  
BASED  
ON  
SKILL  
MYSTERY,  
MENTAL  
AND  
PHYSICAL

**CORPORATE  
EVENT  
CAPACITY  
32+  
GUESTS**

---

UNIQUE EVENT  
SPACE - PERFECT  
FOR MEETINGS,  
DINNERS AND  
PRESENTATIONS



PLAY  
FOR  
REAL



**ENJOY YOUR TEAM DAY  
OUT AT THE CRYSTAL MAZE  
LIVE EXPERIENCE**

A day out at The Crystal Maze is unlike any other team day you've done before.

In each zone you'll test your skills, solve mysteries and face challenges both mental and physical, all against the clock. The more challenges you complete successfully, the more Crystals you will win and the more time you will get in your final challenge, the iconic Crystal Dome.





AZTEC



INDUSTRIAL

You'll **journey** through our four fantastic zones – Industrial, Futuristic, Medieval and Aztec.



MEDIEVAL



FUTURISTIC



## PLANNING YOUR EVENT

—

The Maze, and our meeting/bar area is **exclusively yours** for the time of your booking.

Our corporate packages are suitable for any business with **32+** guests.

So whether you are entertaining clients, or running a team building event, The Maze is the perfect place for you.

Our day and evening corporate packages include use of our event space, so you can spend your whole away day with us.

It's customisable too, got a wacky idea (we love those!) just ask.

—



OUR  
CORPORATE  
PACKAGES  
2019



# WAYS TO PLAY

<p><b>PLAY AT THE SAME TIME</b></p> <p><b>Groups of 32+ £110 - £165pp + VAT</b></p>	<p><b>PLAY FOR LONGER</b></p> <p><b>Groups of 32+ £110 - £165pp + VAT</b></p>	<p><b>PLAY TOGETHER AND FOR LONGER</b></p> <p><b>Groups of 32+ £140- £195pp + VAT</b></p>	<p><b>PLAY QUICKLY</b></p> <p><b>Groups of 32+ £90- £145pp + VAT</b></p>	<p><b>EXCLUSIVE BUILDING AND MAZE PRIVATE HIRE</b></p> <p><b>Groups of 32+ From £15,000 + VAT</b></p>	<p><b>EVENT SPACE HIRE</b></p> <p><b>Groups of up to 64 From £2,000 + VAT</b></p>
<p> Exclusive time in the Maze</p> <p> Up to 8 teams of 8, can enter the maze together – allowing everyone to start and finish at the same time</p>	<p> Exclusive time in the Maze</p> <p> Teams will enter the Maze every 15 minutes and have longer in each zone (more time = more games)</p>	<p> Exclusive time in the Maze</p> <p> Up to 8 teams of 8, can enter the maze together – allowing everyone to start and finish at the same time. And play longer in each zone (more time = More games)</p>	<p> Exclusive time in the Maze</p> <p> Teams of 8 enter the maze every 8 minutes</p>	<p> Exclusive time in the Maze</p> <p> Depending on the number of guests we can customise Maze plan to suit your event</p>	
<p> Exclusive event space hire</p>	<p> Exclusive event space hire</p>	<p> Exclusive event space hire</p>	<p> Exclusive event space hire</p>	<p> Exclusive building hire (Maze, The Drama Club Bar, and Event Space)</p>	<p> Use of the Corporate Event space</p>
<p> Digital photos, exclusive souvenir medallion, and access to drinks and merchandise packages</p>	<p> Digital photos, exclusive souvenir medallion, and access to drinks and merchandise packages</p>	<p> Digital photos, exclusive souvenir medallion, and access to drinks and merchandise packages</p>	<p> Digital photos, exclusive souvenir medallion, and access to drinks and merchandise packages</p>	<p> Digital photos, exclusive souvenir medallion, and access to drinks and merchandise packages</p>	
<p> Delicious catering – with unlimited tea and coffee</p>	<p> Delicious catering – with unlimited tea and coffee</p>	<p> Delicious catering – with unlimited tea and coffee</p>	<p> Delicious catering – with unlimited tea and coffee</p>	<p> Delicious catering – with unlimited tea and coffee</p>	<p> Unlimited tea and coffee. Catering available on request</p>

Corporate packages are available between 9am – 2pm Tuesday to Friday, and anytime on Mondays. Other times are available, subject to availability.

BUT, DON'T  
JUST  
TAKE  OUR  
WORD  
FOR IT...





“The **ultimate team building experience**, huge amount of fun mixed in with some healthy competition, all in all created a great day out for the team.”



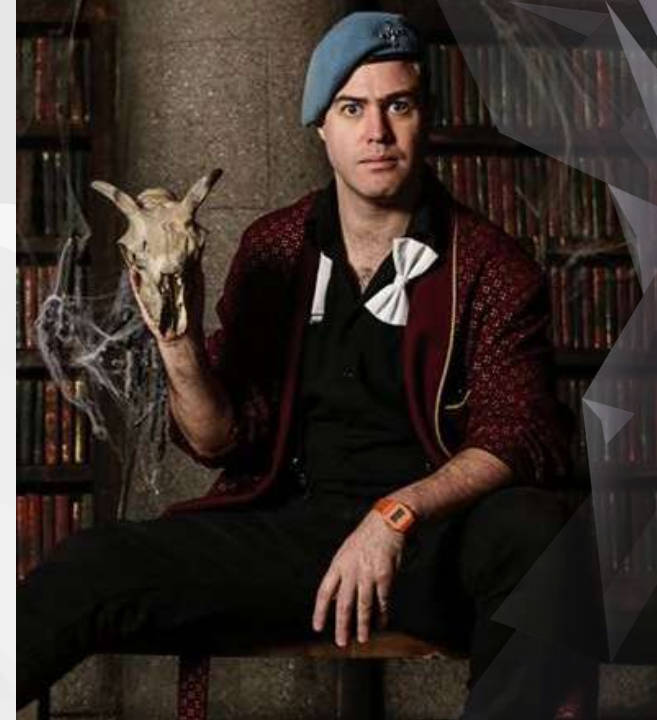
“**THE BEST** Christmas party we have had to date. The team building and moral was **top notch!**”



“An amazing event to attend with friends or a **great team building** work event, after 3 trips, I am raring to go again!”



“Everyone is still **raving** about the day, especially the Crystal Dome and the Maze Masters. **We will most certainly be back!**”





**IF YOU'RE LOOKING  
FOR AN EXCITING AND  
DIFFERENT WAY TO ENGAGE  
YOUR TEAMS, YOU'LL BE  
AMAZED AT WHAT WE HAVE  
TO OFFER. SO, WHAT ARE  
YOU WAITING FOR?**

**CONTACT US ON:**

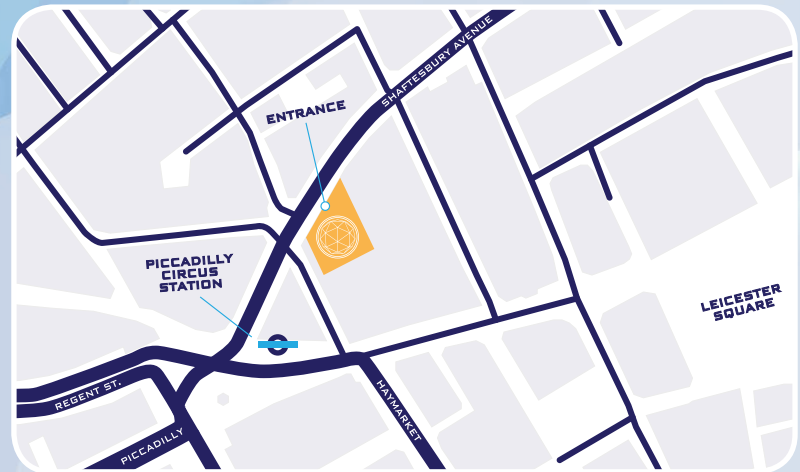
**[Events@the-crystal-maze.com](mailto:Events@the-crystal-maze.com)**

**0203 950 9110**

**[www.the-crystal-maze.com](http://www.the-crystal-maze.com)**



# HOW TO FIND US



22-23 Shaftesbury Avenue  
London W1D 7EJ

## **By public transport:**

3 minutes walk from Piccadilly Station.

5 minute walk from Leicester Square Station.

12 minute walk from Covent Garden Station  
and Charing Cross Station.

15 minute walk from Embankment Station.