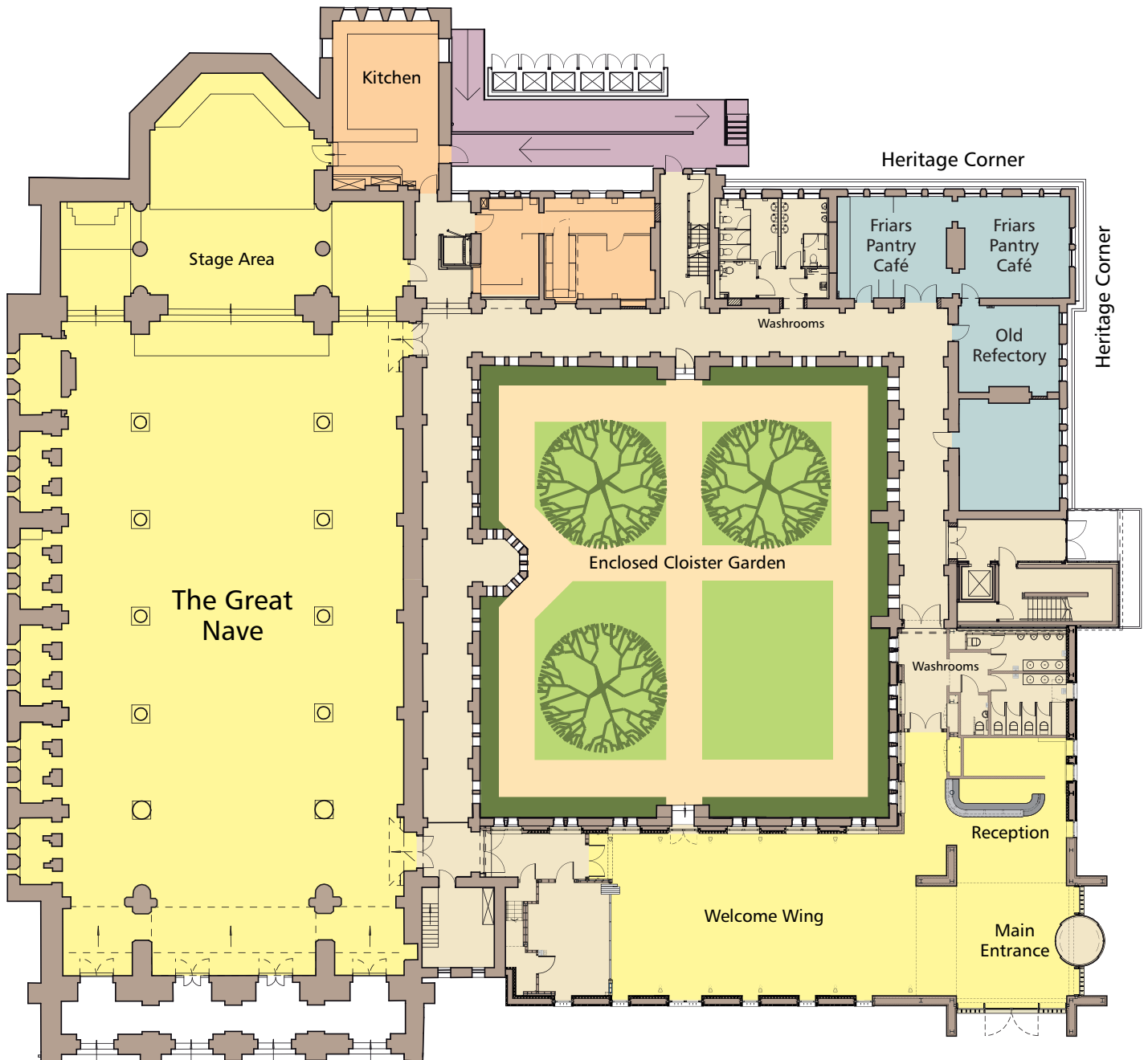


# Monastery Ground Floor Plan



## Meeting & Function Rooms

### The Great Nave

722 sq m (38 x 19 x 45m)  
 (450 delegates on round tables  
 of 10 or 650 theatre style)

### Stage Area

46.5 sq m (9.7 x 4.8m)

### Welcome Wing

171 sq m (19 x 9m)  
 (100 delegates on round tables  
 of 10 or 164 theatre style)

### Cloister Garden

500 sq m (25 x 20m)

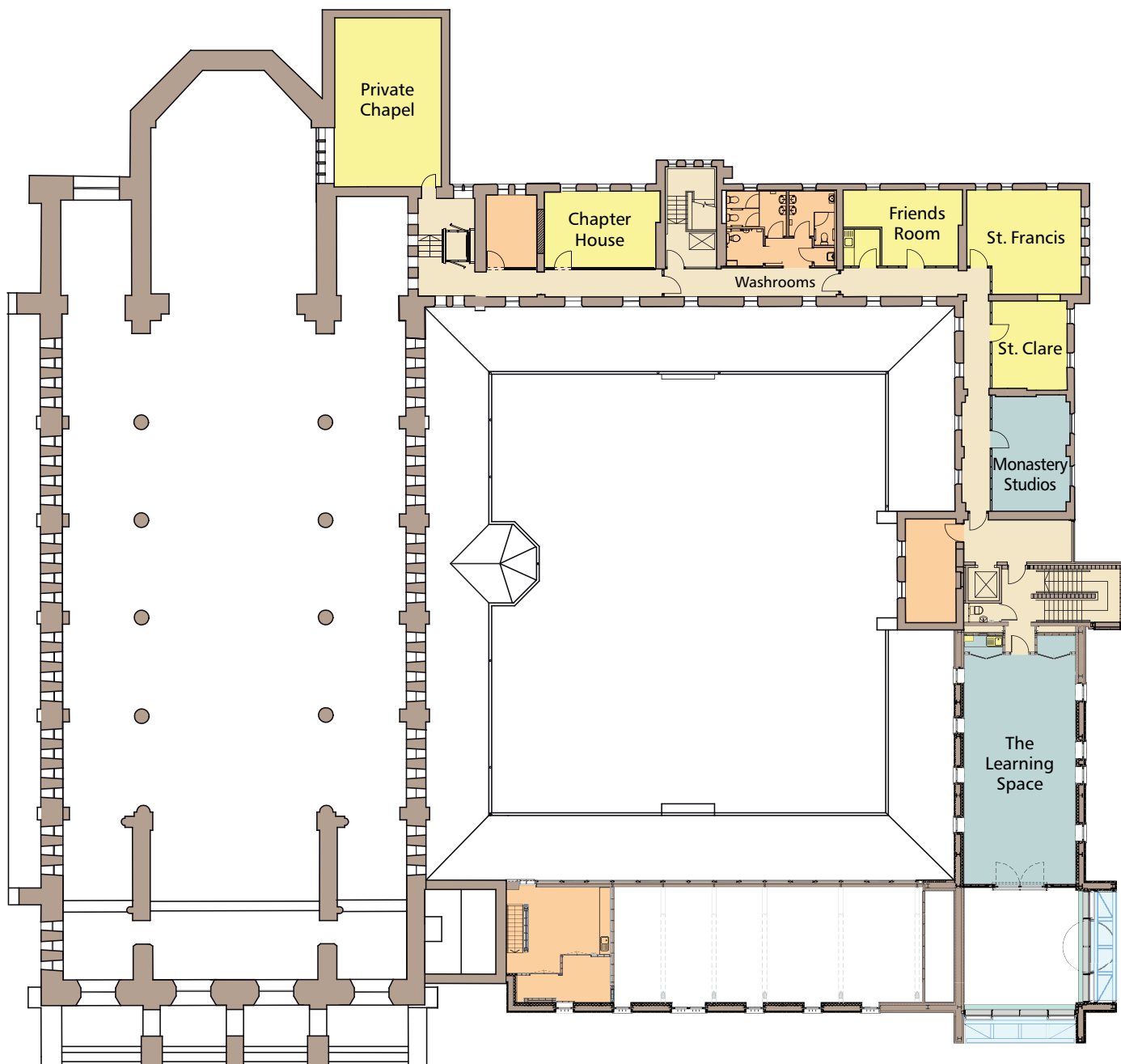
Dimensions (LxWxH) in metres

The  
**Monastery**  
 MANCHESTER

+44 (0)161 223 3211 [events@themonastery.co.uk](mailto:events@themonastery.co.uk) [www.themonastery.co.uk](http://www.themonastery.co.uk)



# Monastery First Floor Plan



## Meeting & Function Rooms

### Private Chapel

59.8 sq m (9.2 x 6.5 x 9)  
up to 70 delegates theatre style or 40 delegates on round tables of 10)

### Chapter House

23.52 sq m (5.6 x 4.2 x 3)  
(14 boardroom style or 20 theatre style)

### St. Francis

33.55 sq m (6.1 x 5.5 x 3)  
(16 boardroom style or 30 theatre style)

### St. Clare

16.72 sq m (4.4 x 3.8 x 3)  
(8 boardroom style)

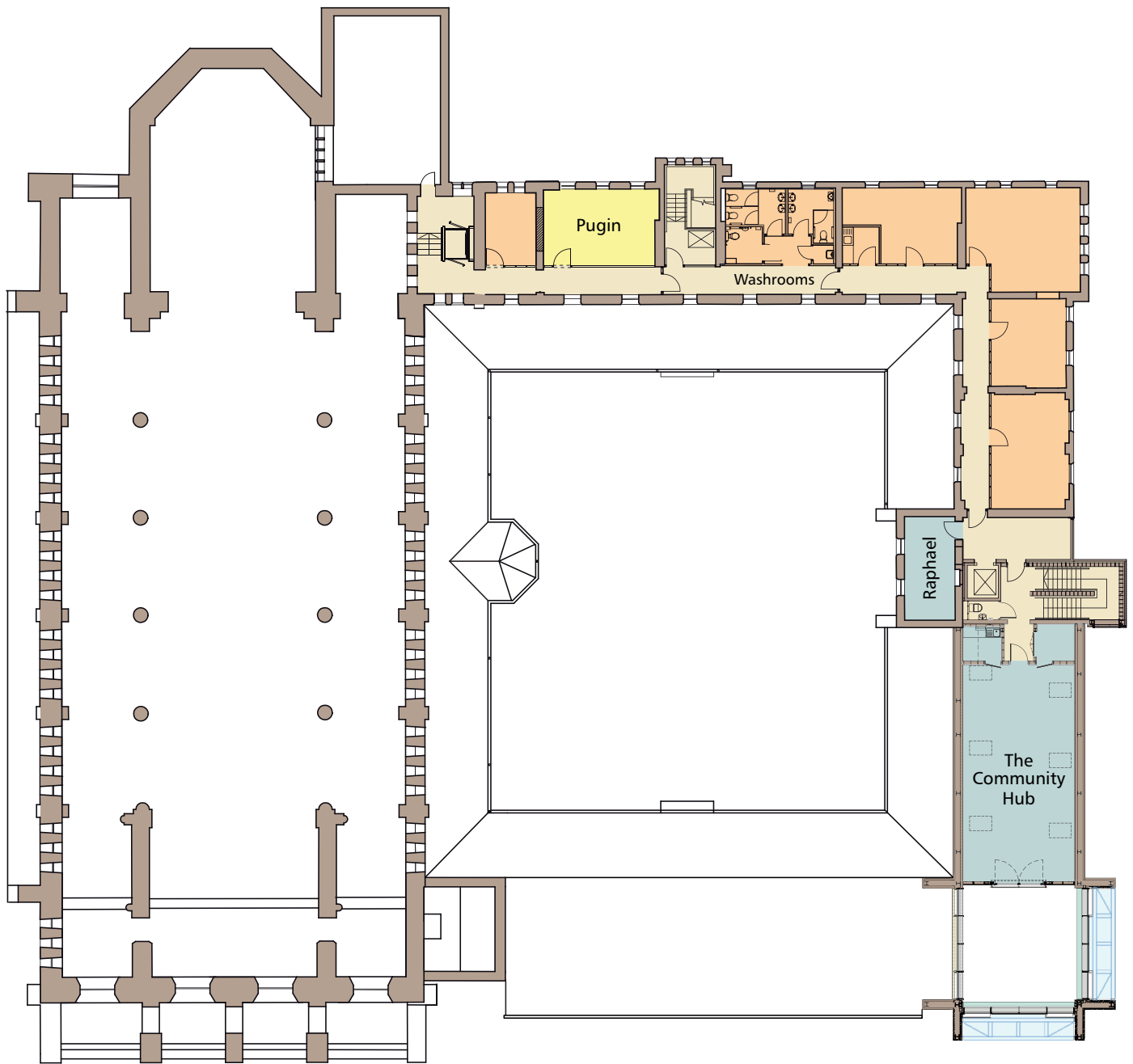
Dimensions (LxWxH) in metres

The  
**Monastery**  
MANCHESTER

+44 (0)161 223 3211 [events@themonastery.co.uk](mailto:events@themonastery.co.uk) [www.themonastery.co.uk](http://www.themonastery.co.uk)



# Monastery Second Floor Plan



## Meeting & Function Rooms

### Pugin

35.34 sq m (6.2 x 5.7 x 3)  
(16 boardroom style or  
40 theatre style)

Dimensions (LxWxH) in metres

The  
Monastery  
MANCHESTER

+44 (0)161 223 3211 [events@themonastery.co.uk](mailto:events@themonastery.co.uk) [www.themonastery.co.uk](http://www.themonastery.co.uk)

